



VIKING ELEMENTARY SCHOOL

"A community of learners dedicated to improving our world."

The **LeaderinMe**™

great happens here

Sheila Flatau, Principal

SCHOOL BOARD REPORT: May 19, 2014

Enrollment:

	2013	2013	2013	2013	2014	2014	2014	2014	2014	2013
	Sept	Oct	Nov	Dec	Jan	Feb	March	April	May	May
K	64	64	64	64	65	66	66	65	65	71
1	69	70	70	69	70	70	70	68	69	67
2	67	68	69	69	70	70	70	70	70	71
3	70	71	71	70	71	72	72	72	71	58
4	60	60	60	60	61	61	61	61	61	72
5	73	73	72	70	71	70	70	70	71	64
6	67	67	67	68	69	69	68	68	67	71
Total	470	473	473	470	477	478	477	474	474	474

Kindergarten (2013-2014):

- Census projects 83 potential students/ **anticipated class size of 71**
 - 5 are planning to wait another year
 - 7 are open enrolled/home-schooled
 - 64 registrations have been turned in

Student Achievement/Staff Development:

- AIMSWEB Spring Benchmark (K-6): May 6-9
 - Results attached
- 2014 MCA Math and Reading preliminary results show improvement
- Summer staff development opportunities available
 - Literacy
 - Math
 - Common formative assessments

Parental Involvement:

- Parent Teacher Partnership's Family Fun Festival- was a great success! Approximately 250 students participated with families!
- Track & Field: May 14-19

Leader in Me

- Refresher training planned for all staff on Tuesday, August 19

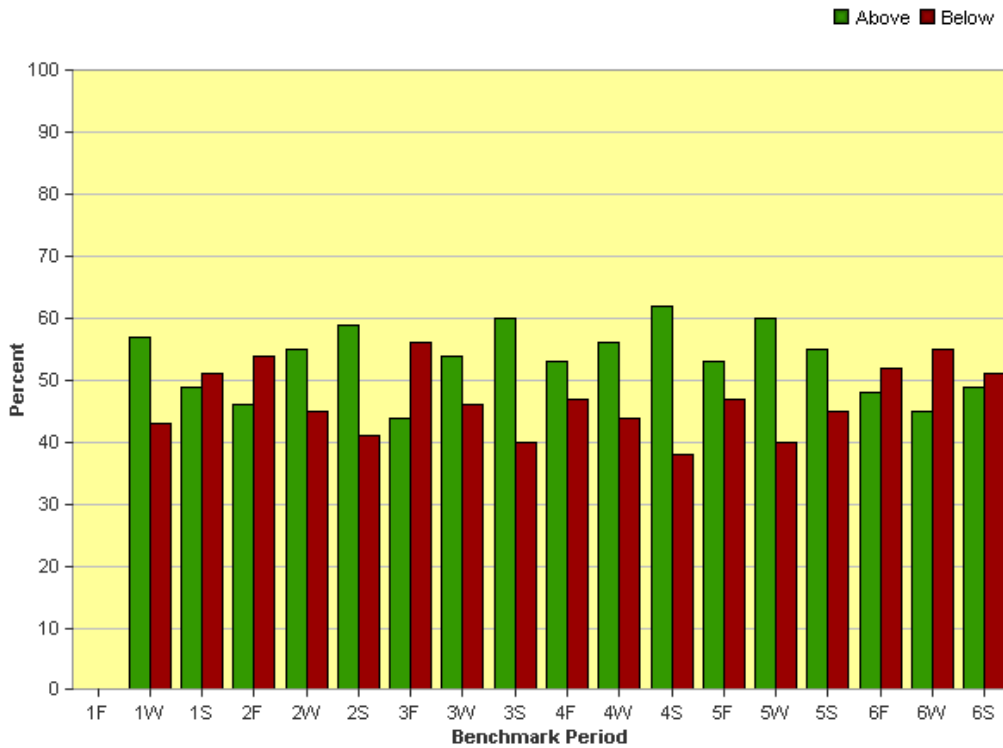
Upcoming Events:

~6th grade trip (5/20-5/21)

~Last student day (5/22)

Percent of Students Above & Below Target

Pelican Rapids Public Schools #548 - Viking Elementary

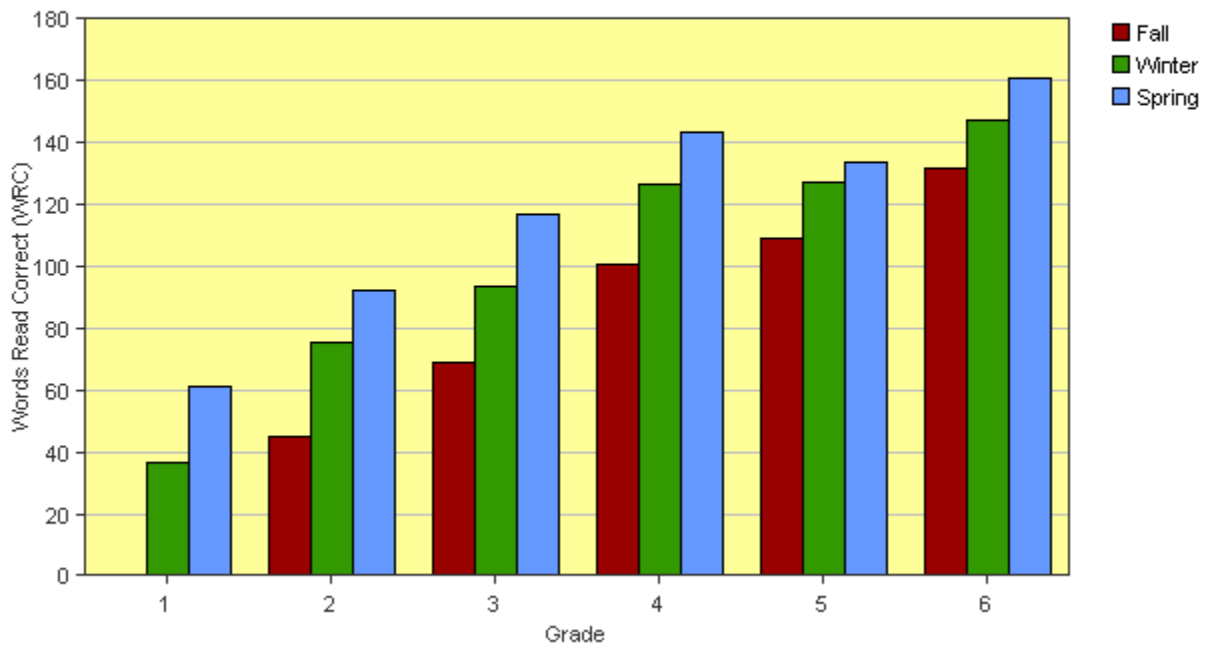


Performance of Average Student by Benchmark Period

Pelican Rapids Public Schools #548 - Viking Elementary

2013-2014 School Year

Reading - Curriculum Based Measurement



Copyright © 2014 NCS Pearson, Inc. All Rights Reserved. Patent No. 7,311,524

[Type text]